

CBA-F27 LWD VISION RT 500MD

Format: VISION SERVICE RT 500MD

Vertical Scale: 1:500

Graphics File Created: 23-May-2009 04:51

PIP SUMMARY

arcVISION Gamma Ray

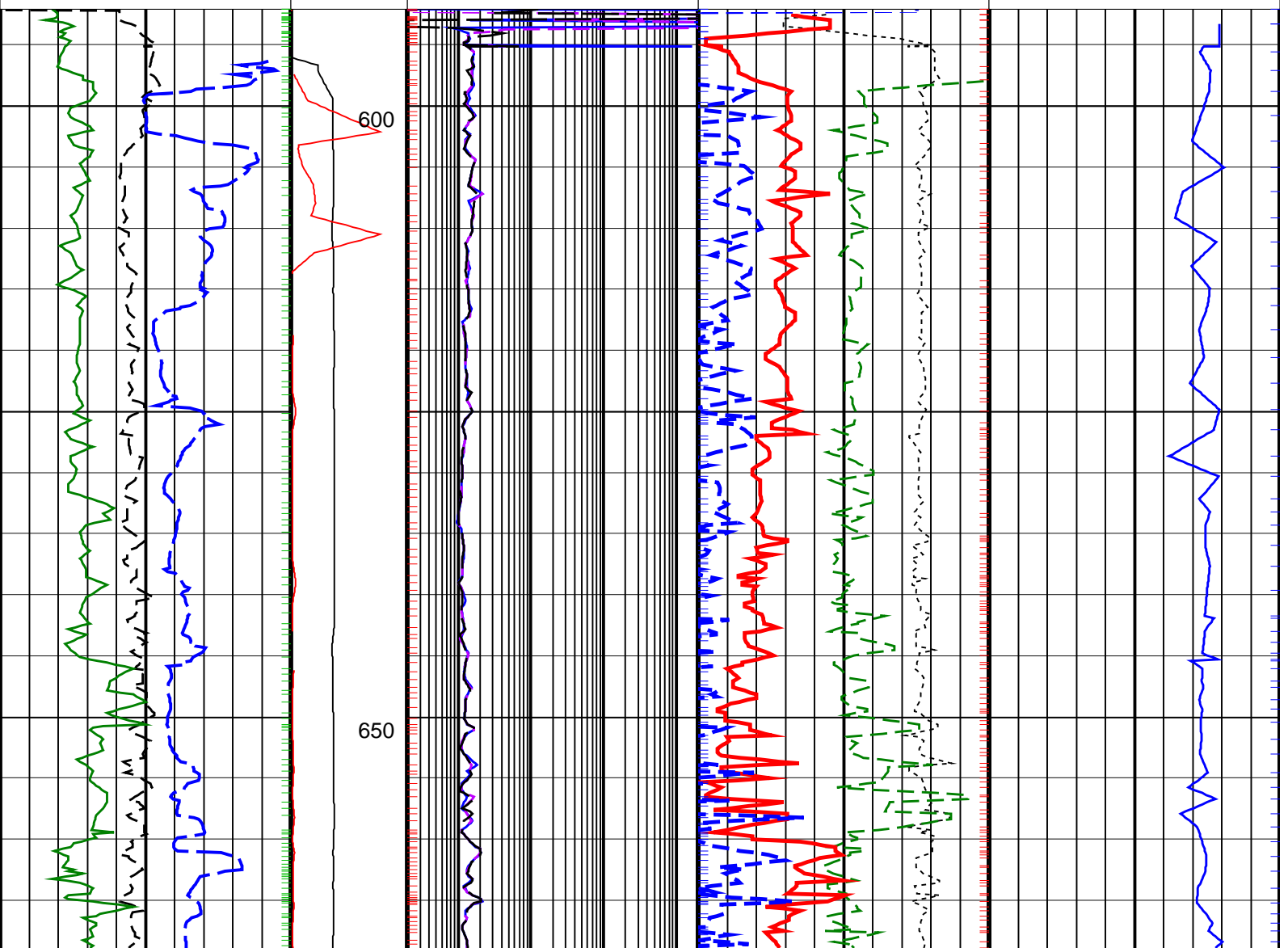
Delta-T Compressional, Real-Time

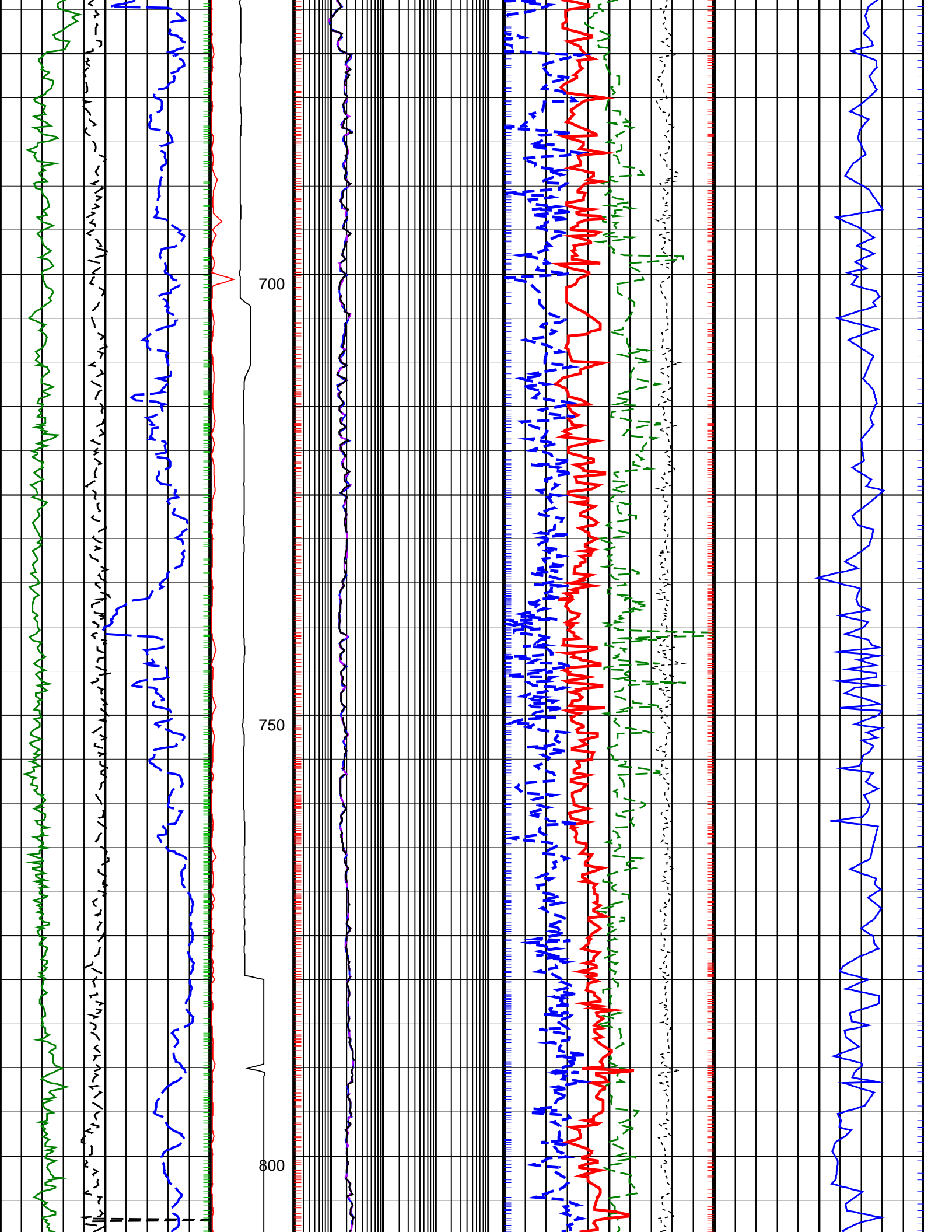
Resistivity

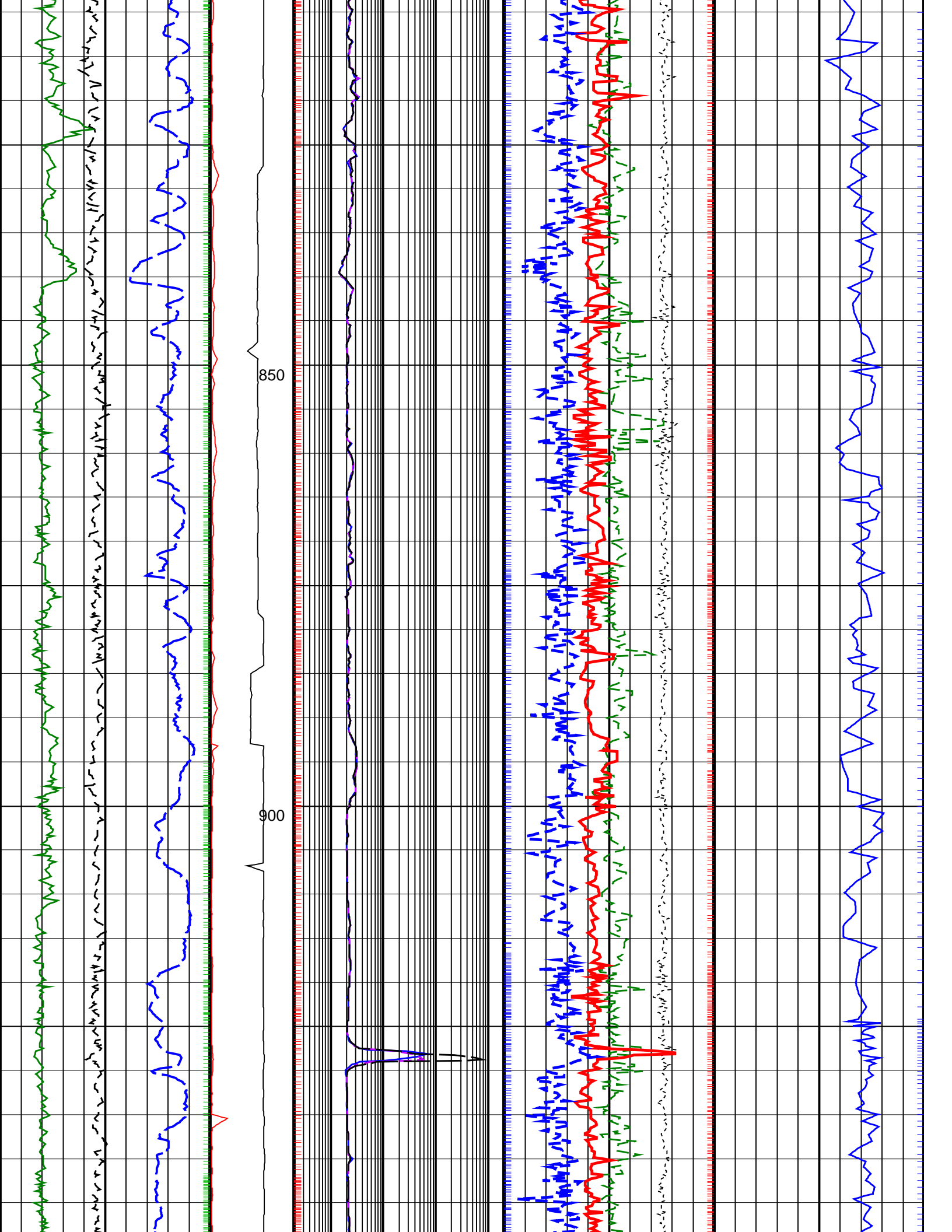
ROBB (Density Bottom)

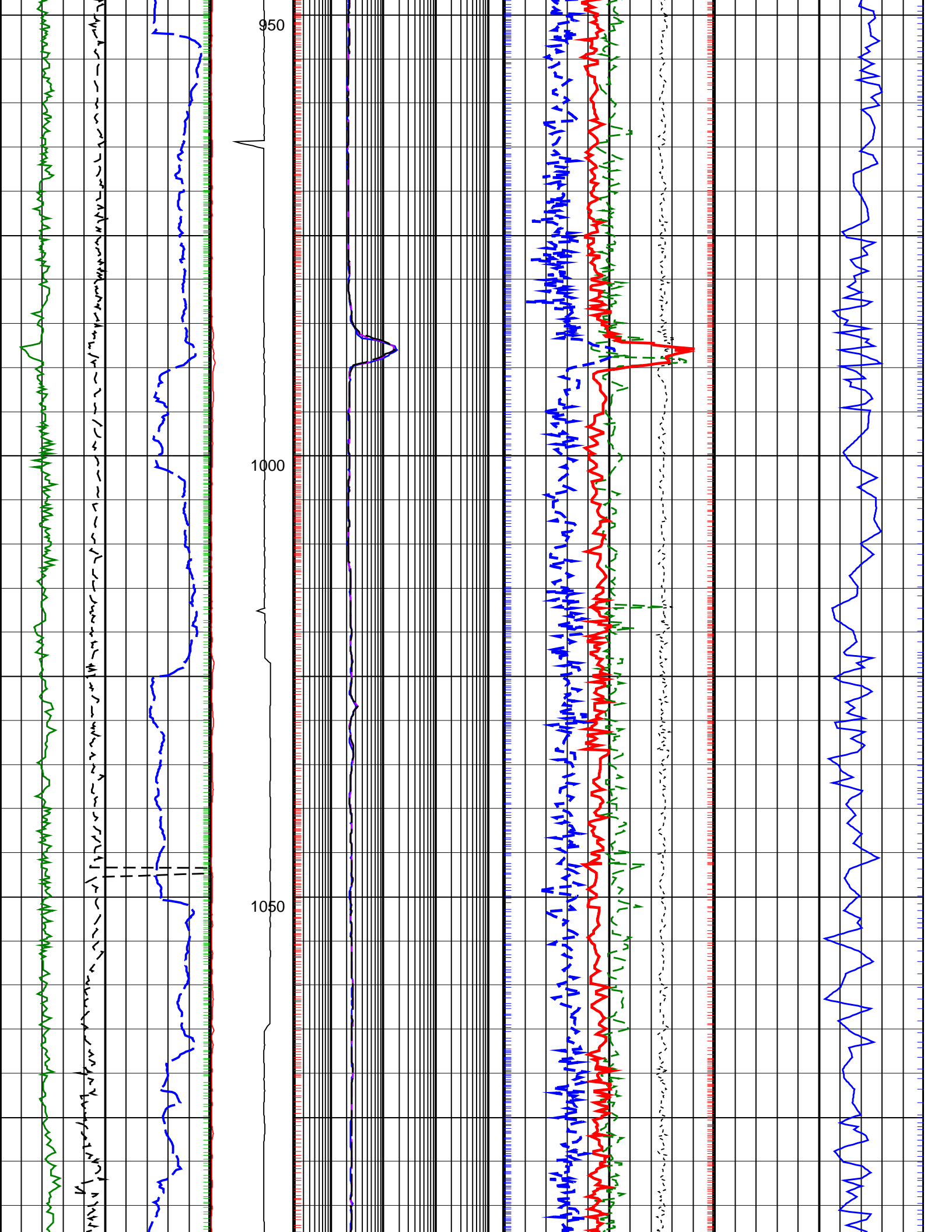
TNPH (Thermal Neutron Porosity)

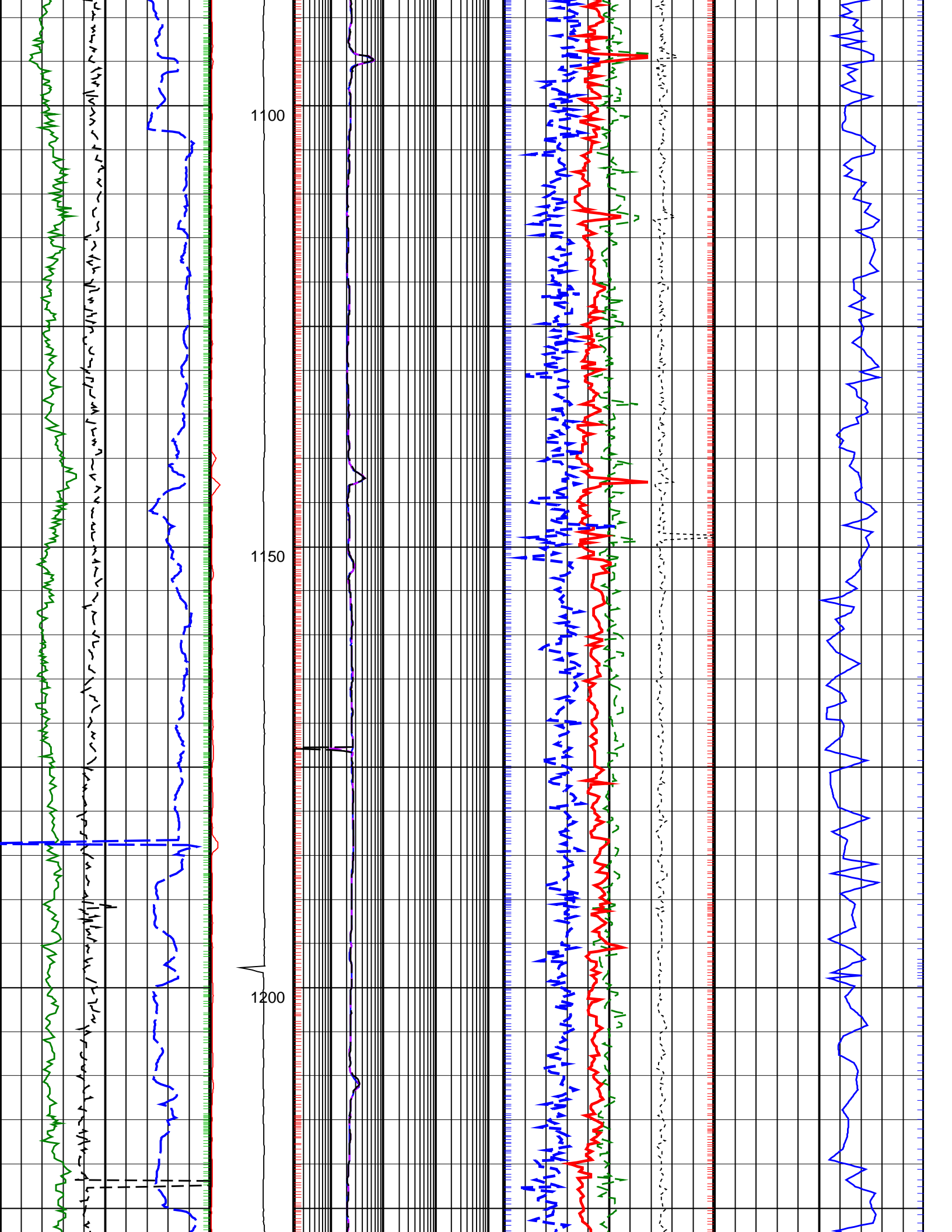
		Thermal Neutron Porosity, Real-Time (TNPH_ADN_RT) 45 (PU) -15	
ARC Gamma Ray, Real-Time (ARC_GR_RT) 0 (GAPI) 200		Bulk Density, Bottom, Real-Time Computed Downhole (ROBB_DH_RT) 1.85 (G/C3) 2.85	
Average Borehole Diameter, Real-Time (ADIA_ADN_RT) 6 (IN) 16		Photoelectric Factor, Bottom, Real-Time (PEB_RT) 0 (----) 10	
ROP*5 (ROP5) (M/HR) 200 0		Bulk Density Correction, Bottom, Real-Time Computed Downhole (DRHB_DH_RT) -0.75 (G/C3) 0.25	
PKPK_RPM (Stick_RT) (RPM) 0 500		Delta-T Compressional, Real-Time (DTCO_RT) (US/M) 600 100	
MWD Collar RPM (CRPM_RT) (RPM) 0 250		ARC BHCORR Phase-Shift Resistivity 40-in. at 2 MHz, Real-Time (P40H_RT) (OHMM) 0.2 2000	
ARC BHCORR Phase-Shift Resistivity 28-in. at 2 MHz, Real-Time (P28H_RT) (OHMM) 0.2 2000		ARC BHCORR Phase-Shift Resistivity 16-in. at 2 MHz, Real-Time (P16H_RT) (OHMM) 0.2 2000	

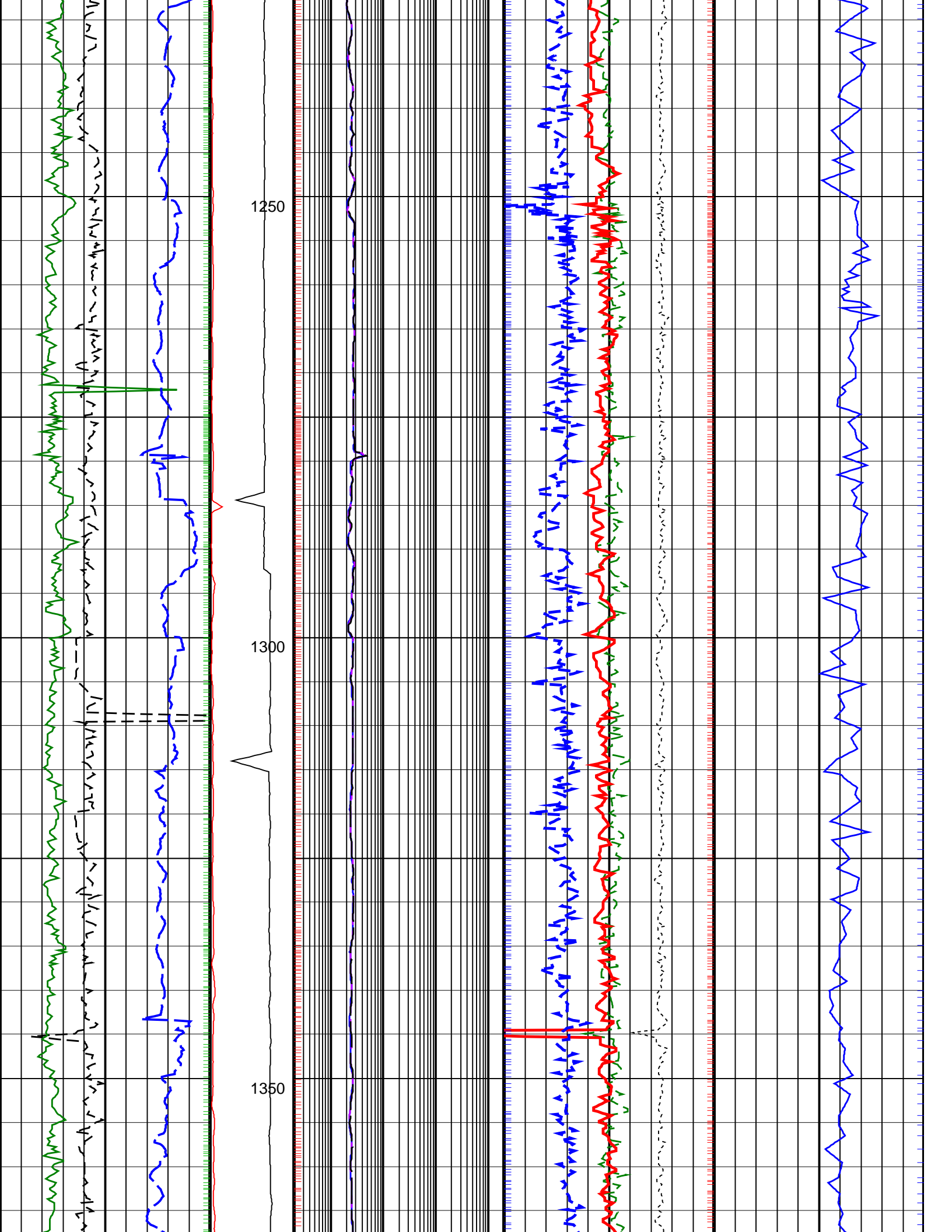


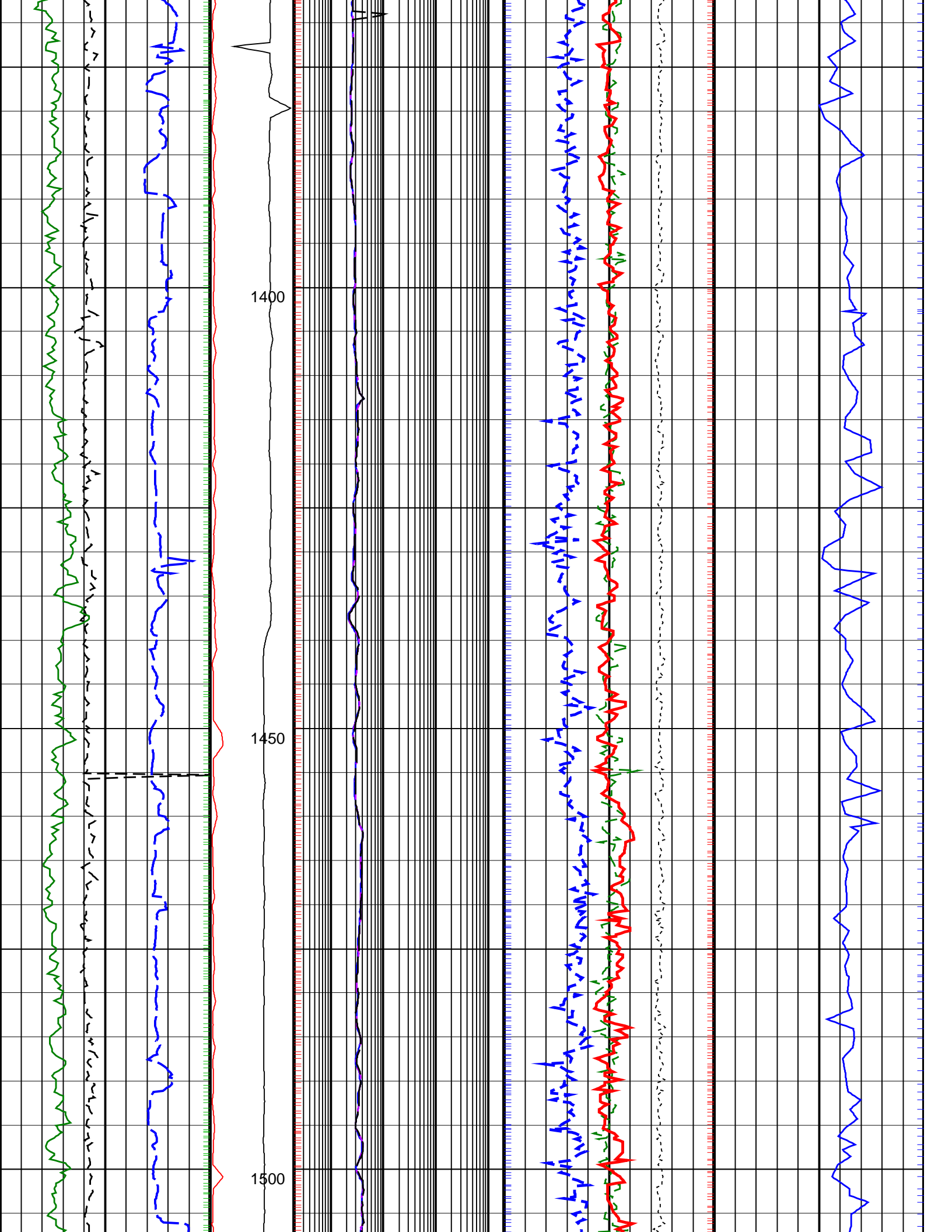


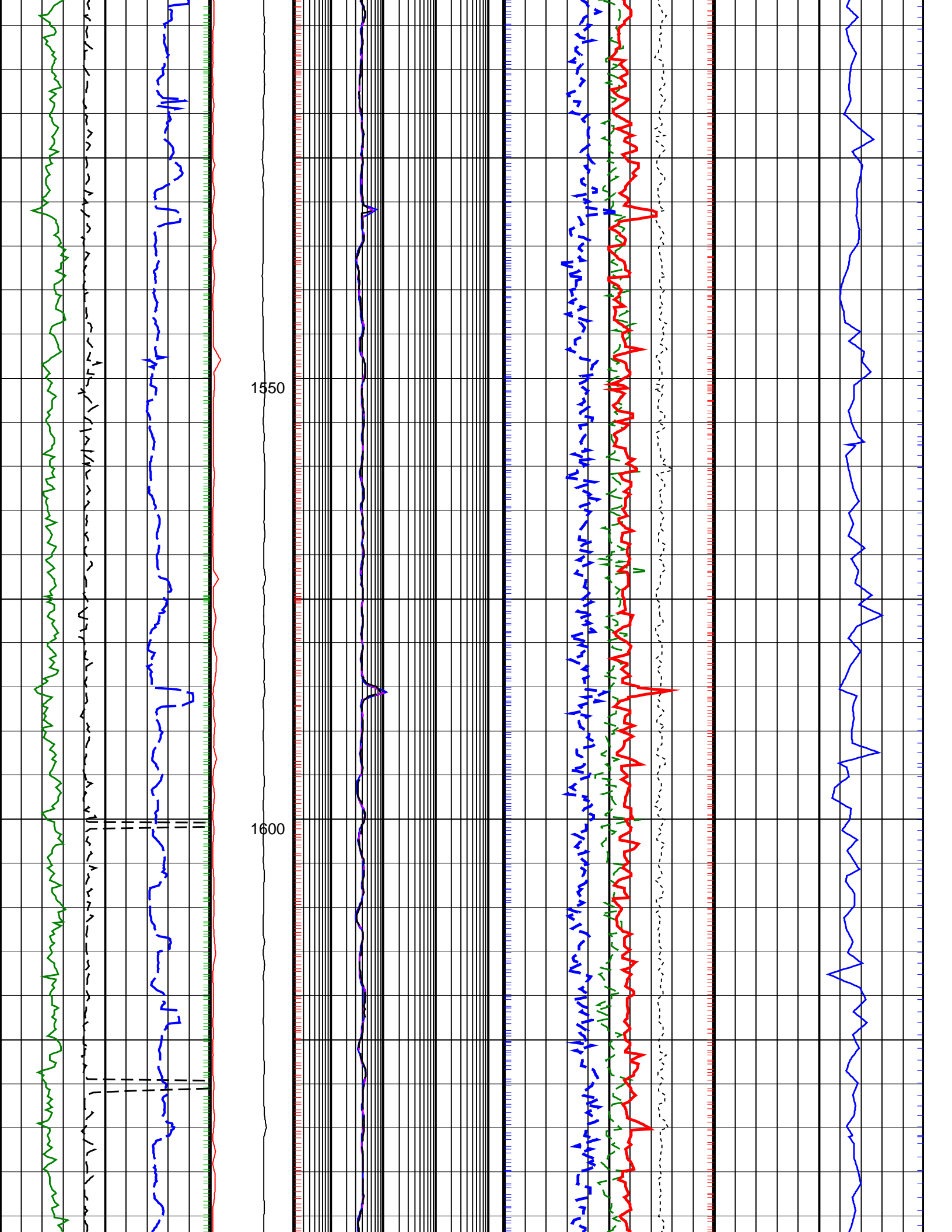


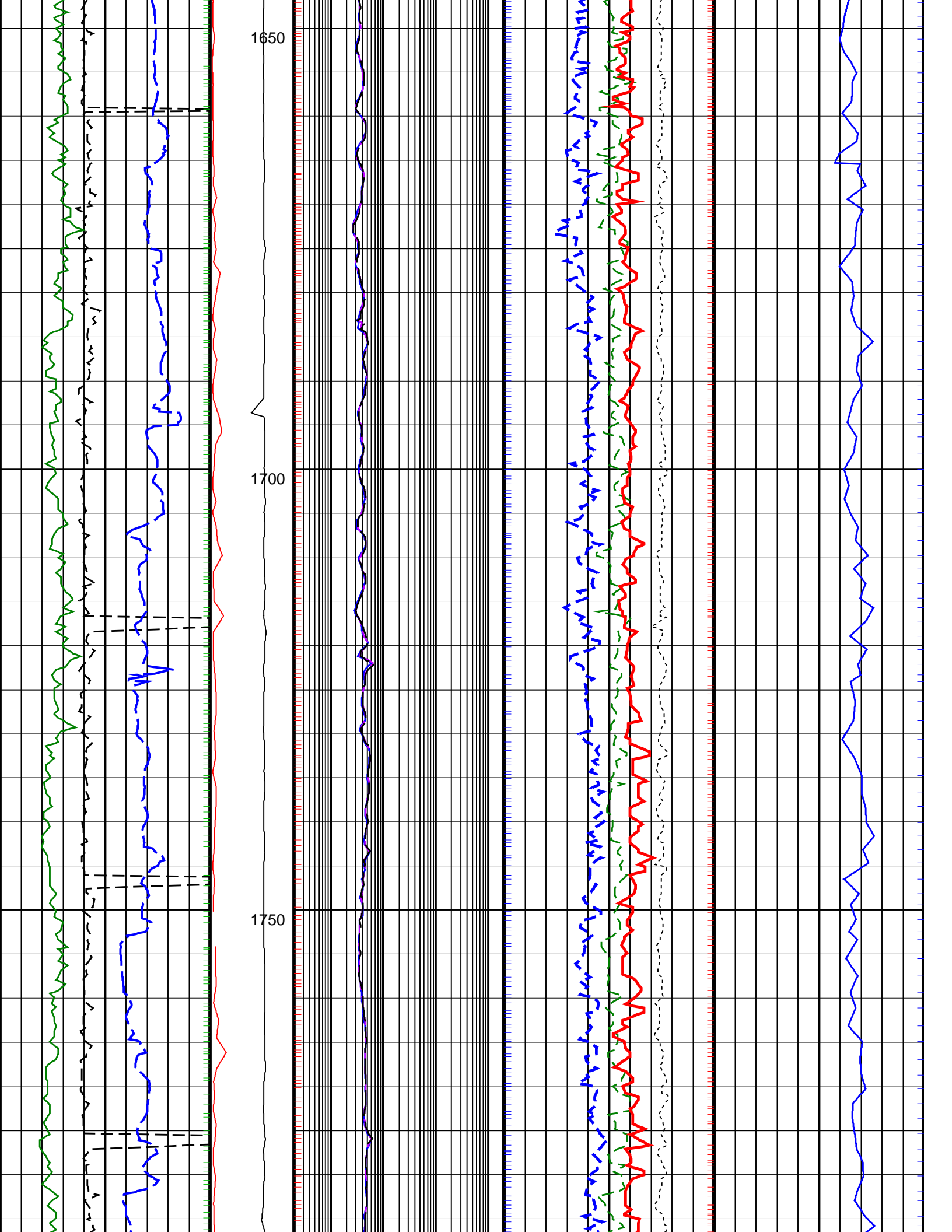


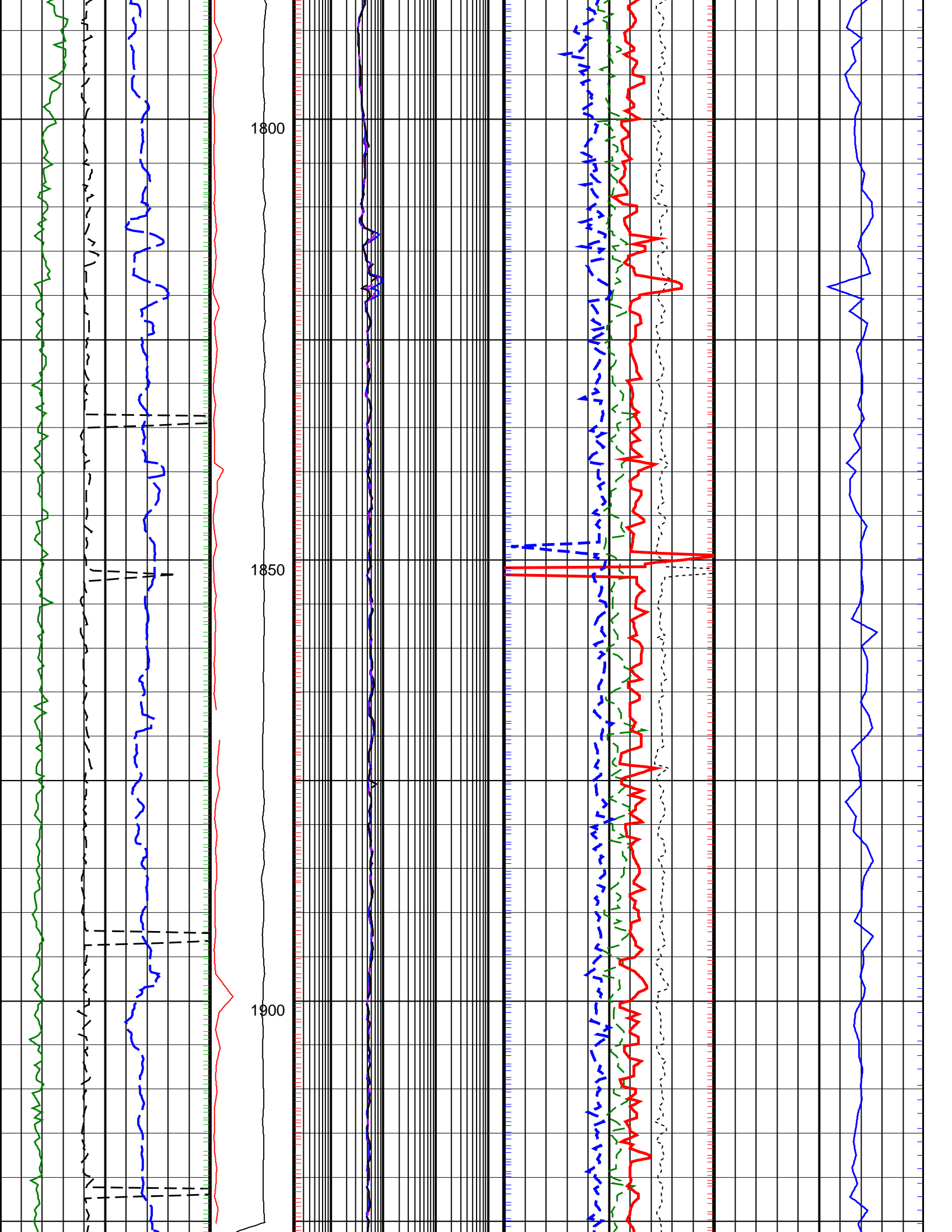


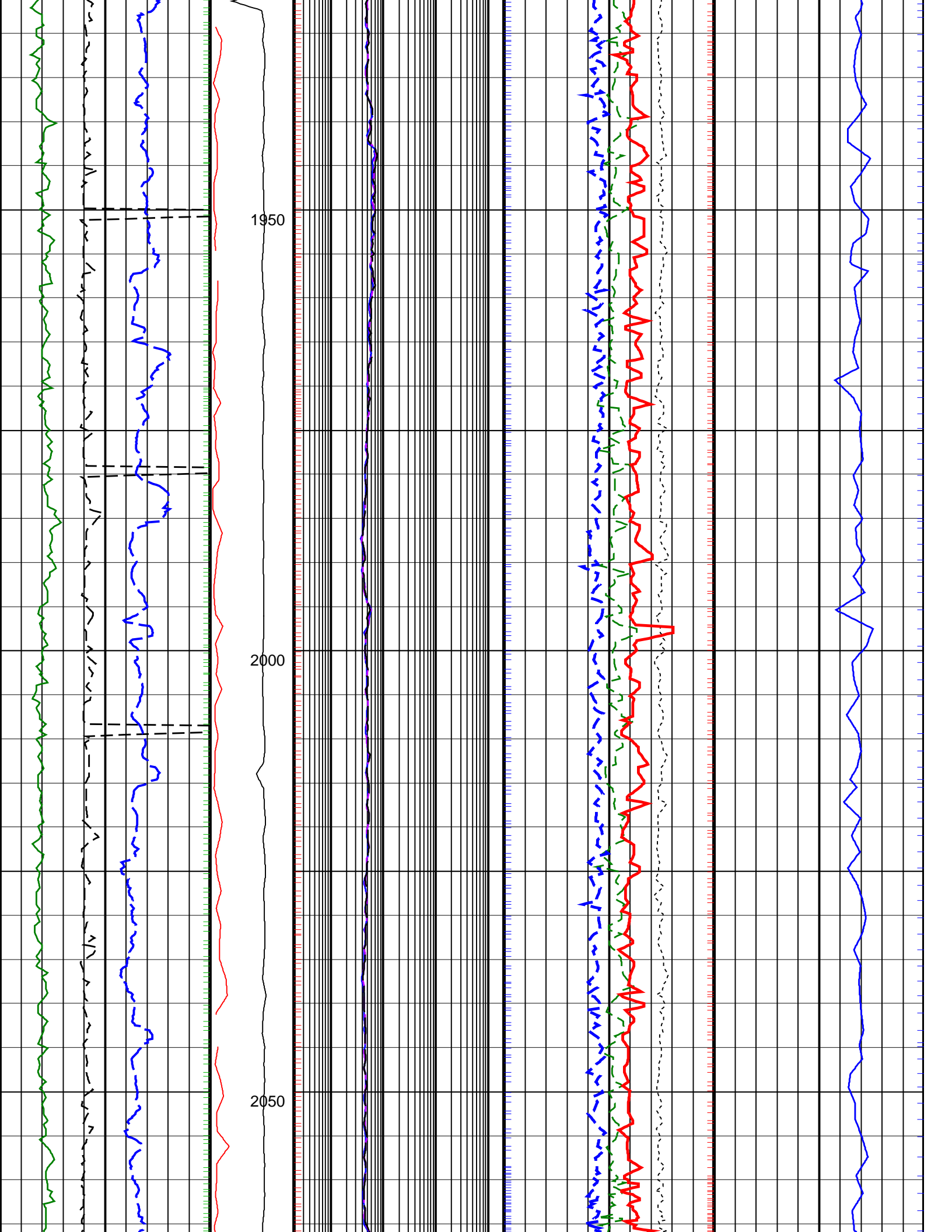


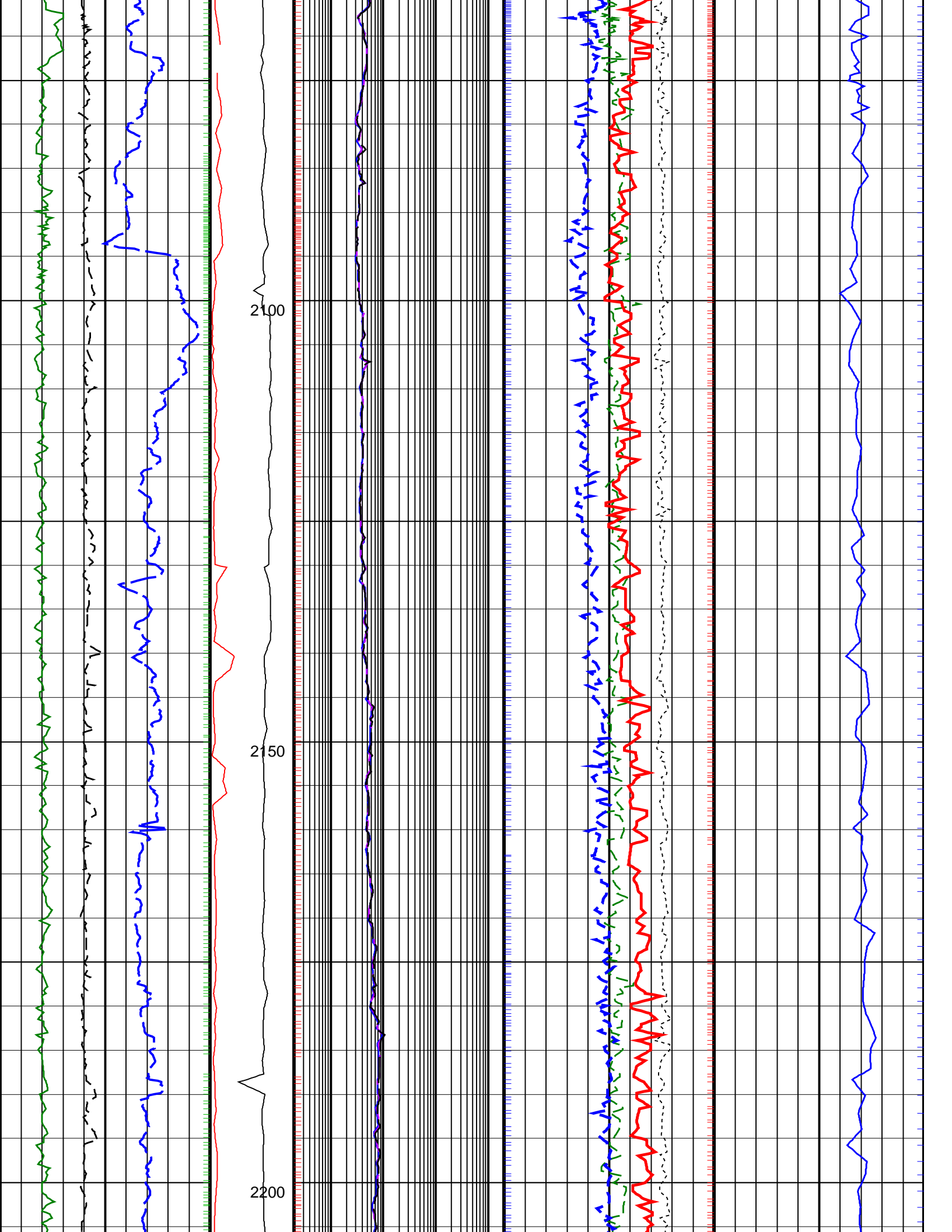


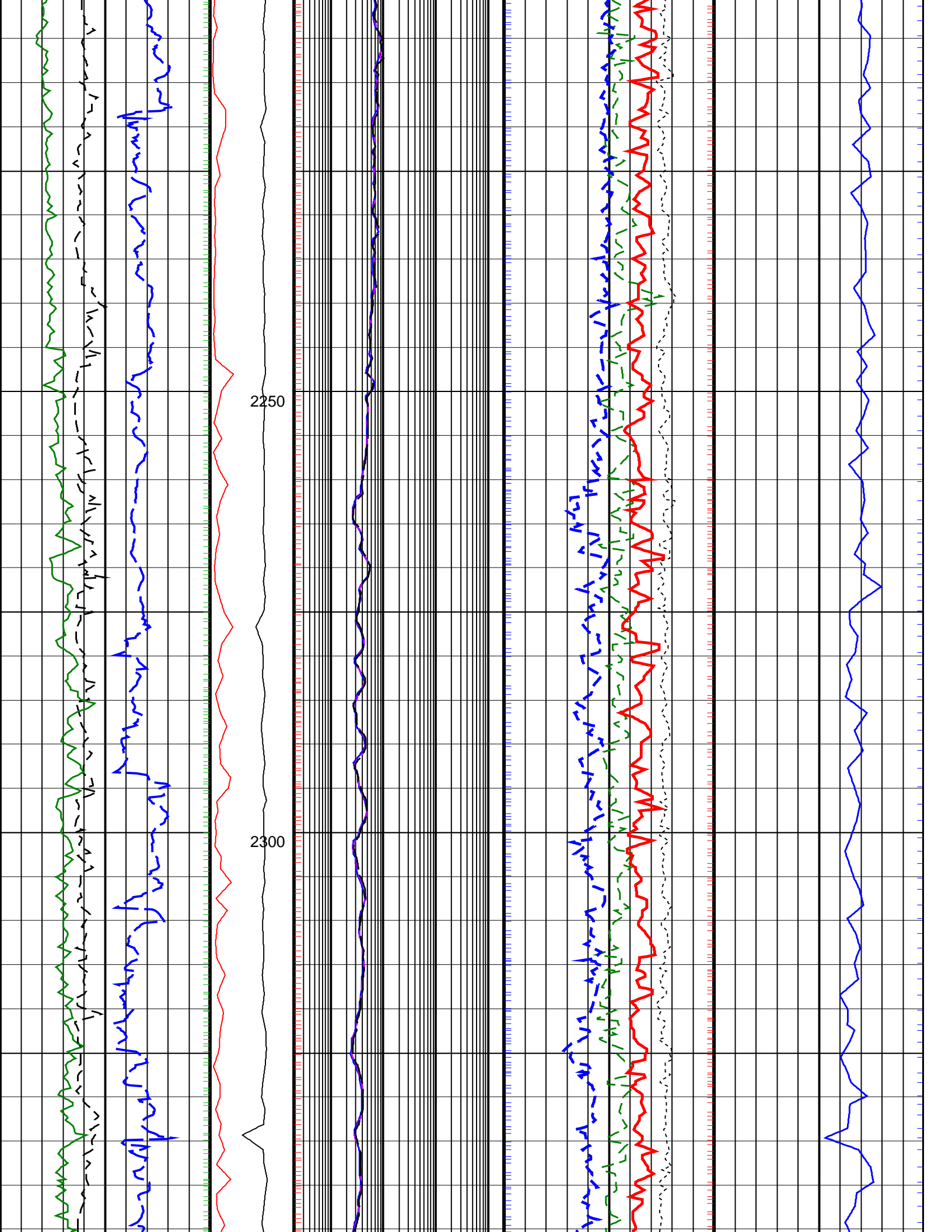


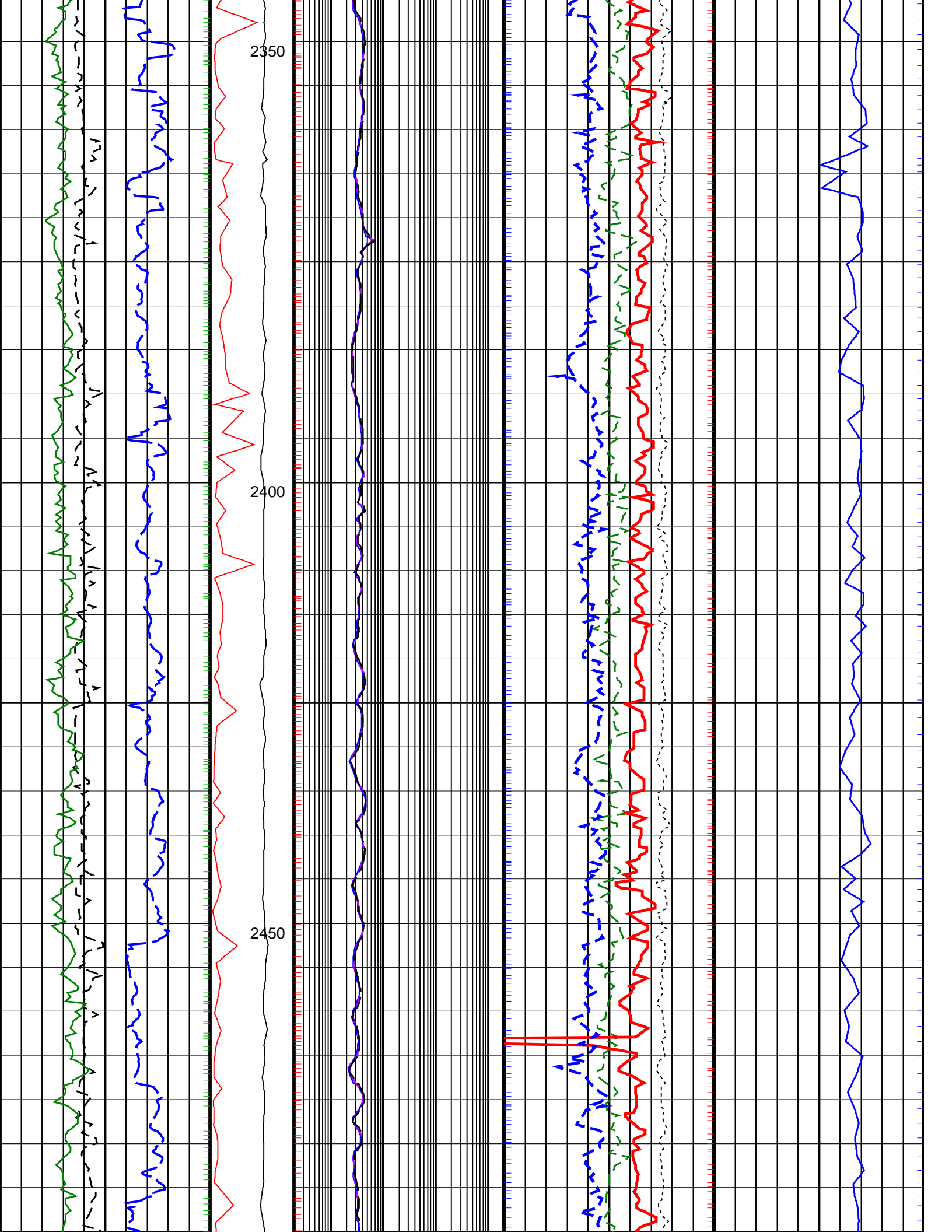


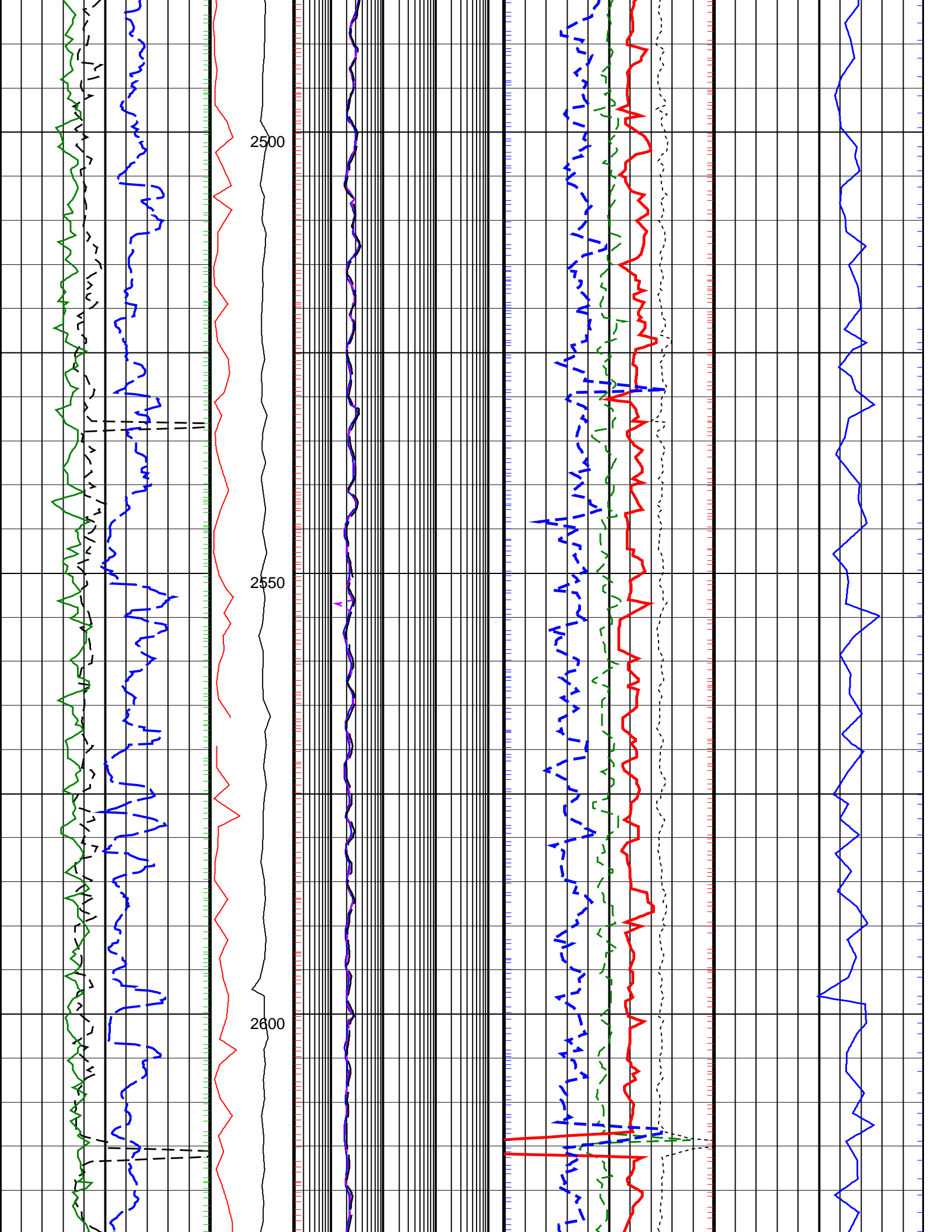


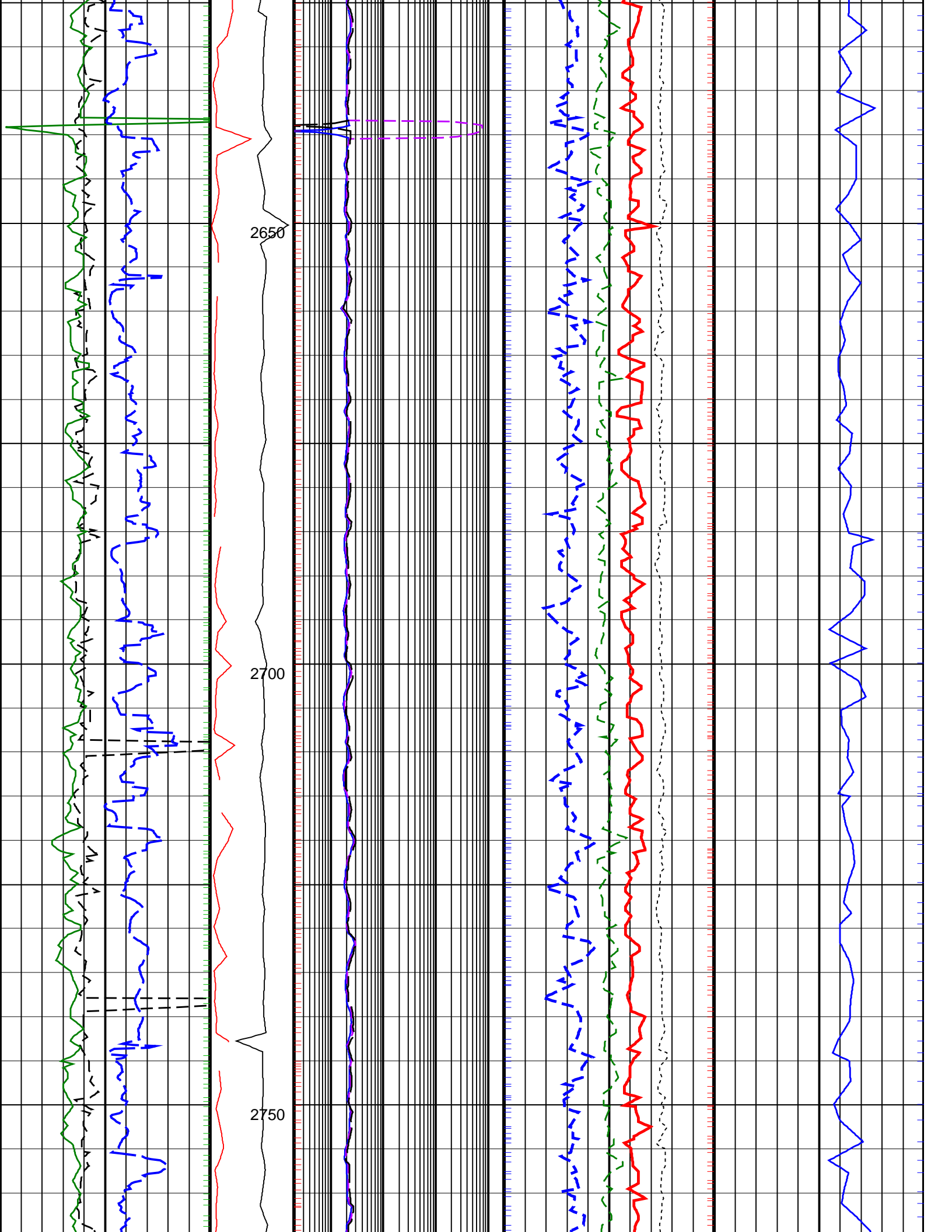


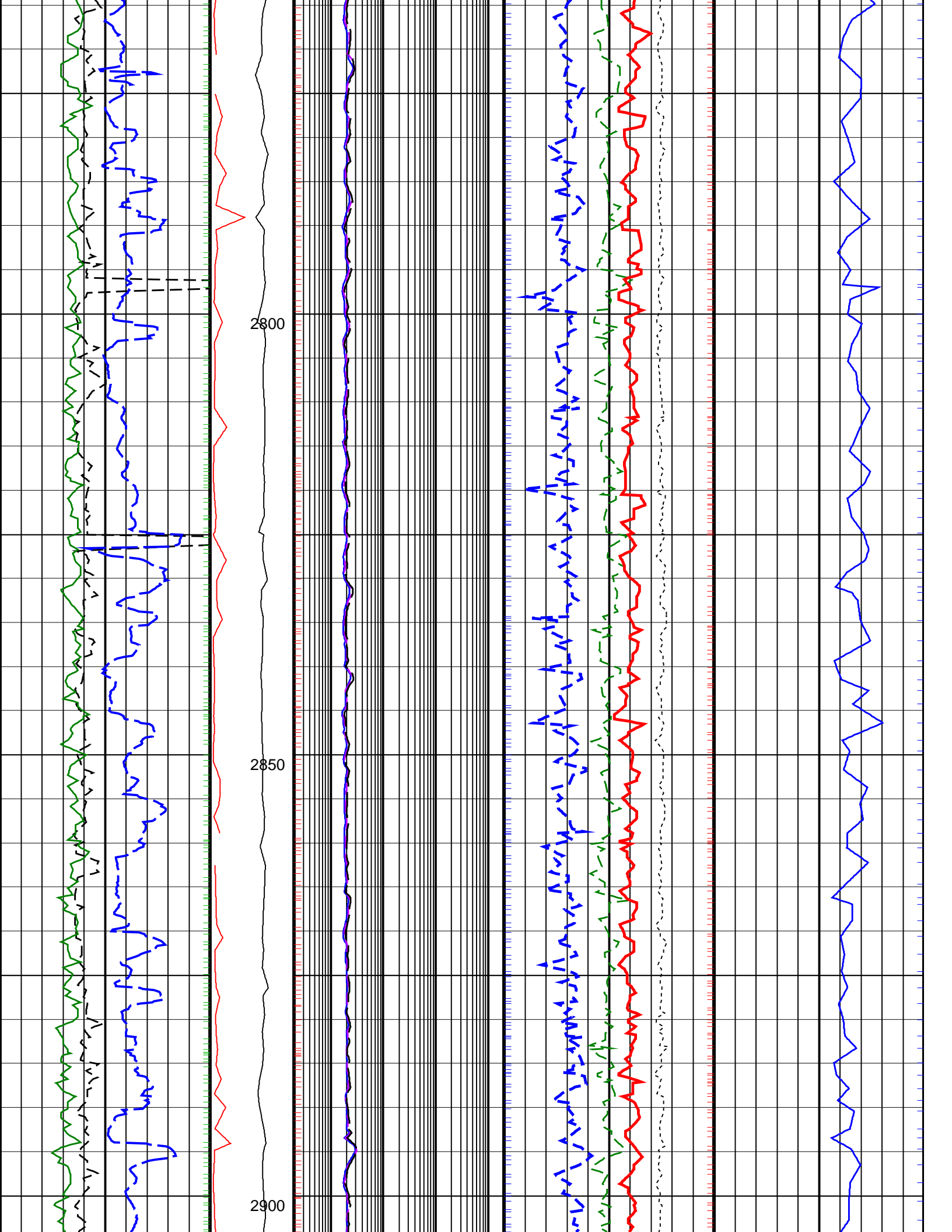


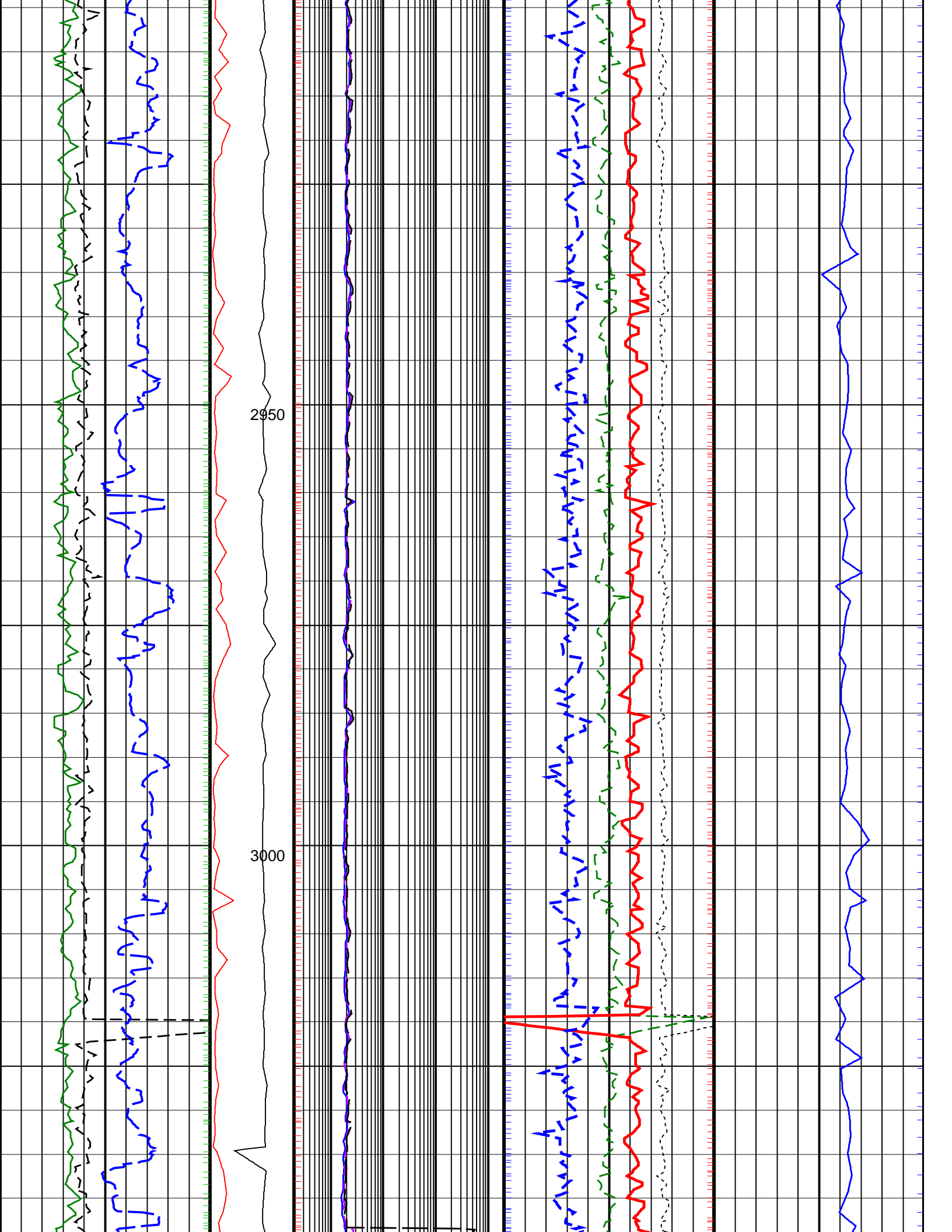


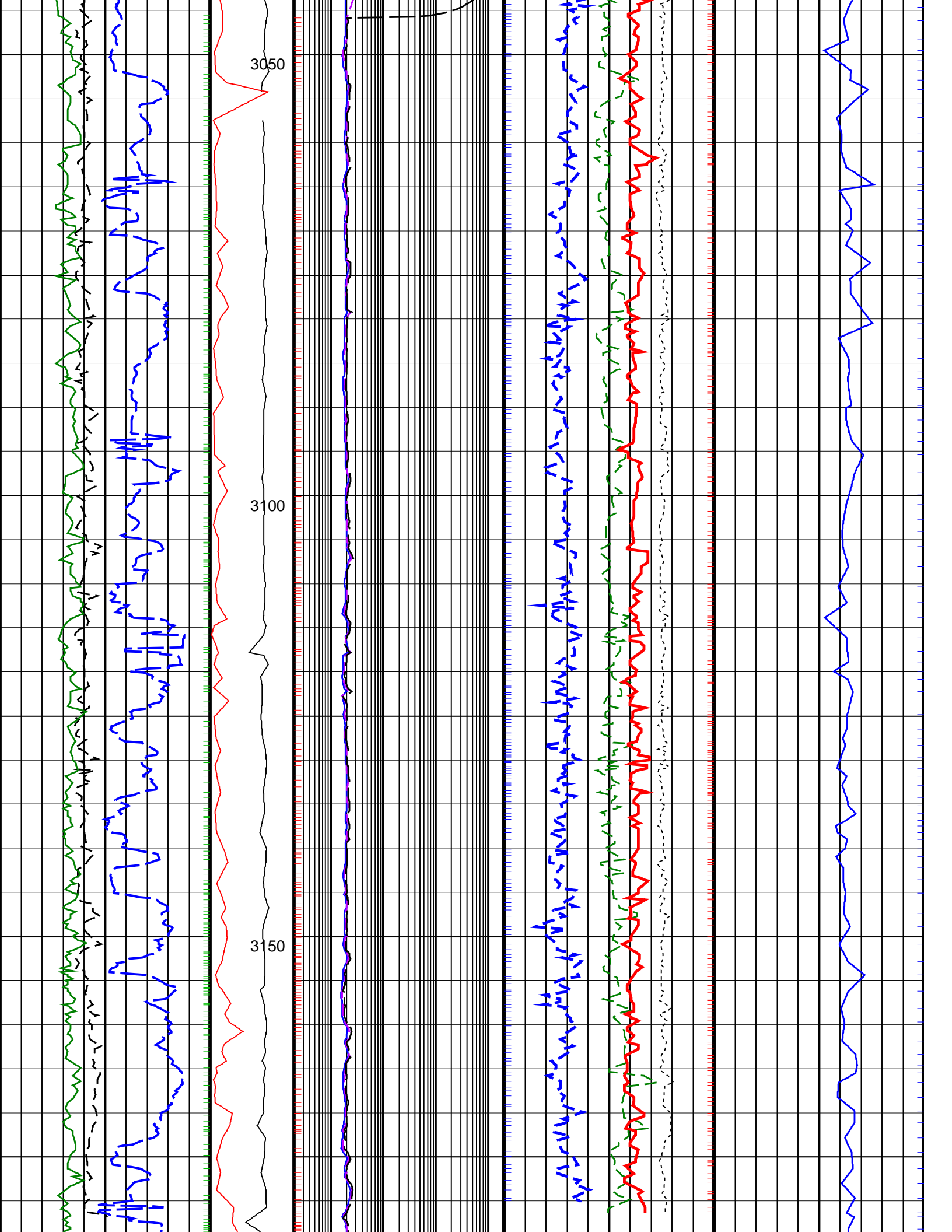


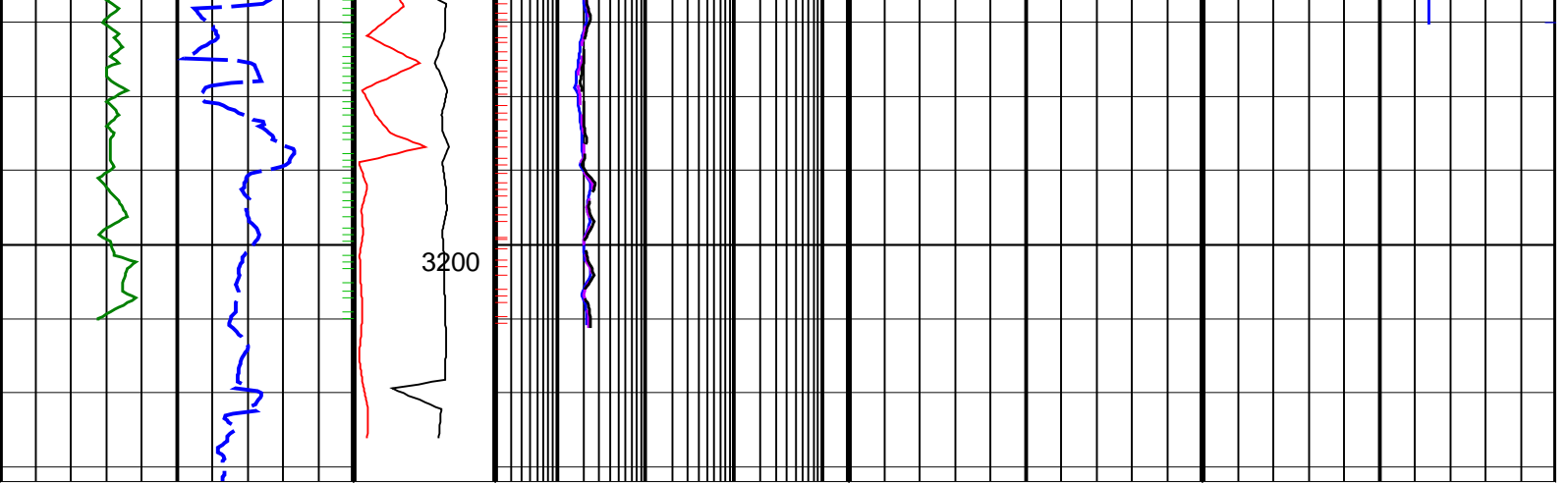












<p>ROP*5 (ROP5) (M/HR)</p> <p>200 0</p>	<p>PKPK RPM (Stick_RT) (RPM)</p> <p>0 500</p>	<p>ARC BHCorr Phase-Shift Resistivity 16-in. at 2 MHz, Real-Time (P16H_RT) (OHMM) 2000</p>	<p>Bulk Density Correction, Bottom, Real-Time Computed Downhole (DRHB_DH_RT) (G/C3)</p> <p>-0.75 0.25</p>	<p>Delta-T Compressional, Real-Time (DTCO_RT) (US/M)</p> <p>600 100</p>
<p>Average Borehole Diameter, Real-Time (ADIA_ADN_RT) (IN)</p> <p>6 16</p>	<p>MWD Collar RPM (CRPM_RT) (RPM)</p> <p>0 250</p>	<p>ARC BHCorr Phase-Shift Resistivity 28-in. at 2 MHz, Real-Time (P28H_RT) (OHMM) 2000</p>	<p>Photoelectric Factor, Bottom, Real-Time (PEB_RT) (-----)</p> <p>0 10</p>	
<p>ARC Gamma Ray, Real-Time (ARC_GR_RT) (GAPI)</p> <p>0 200</p>		<p>ARC BHCorr Phase-Shift Resistivity 40-in. at 2 MHz, Real-Time (P40H_RT) (OHMM) 2000</p>	<p>Bulk Density, Bottom, Real-Time Computed Downhole (ROBB_DH_RT) (G/C3)</p> <p>1.85 2.85</p>	
			<p>Thermal Neutron Porosity, Real-Time (TNPH_ADN_RT) (PU)</p> <p>45 -15</p>	

PIP SUMMARY

arcVISION Gamma Ray

Delta-T Compressional, Real-Time

Resistivity

ROBB (Density Bottom)

TNPH (Thermal Neutron Porosity)

IDEAL Version: ID14_0C_12
IDF